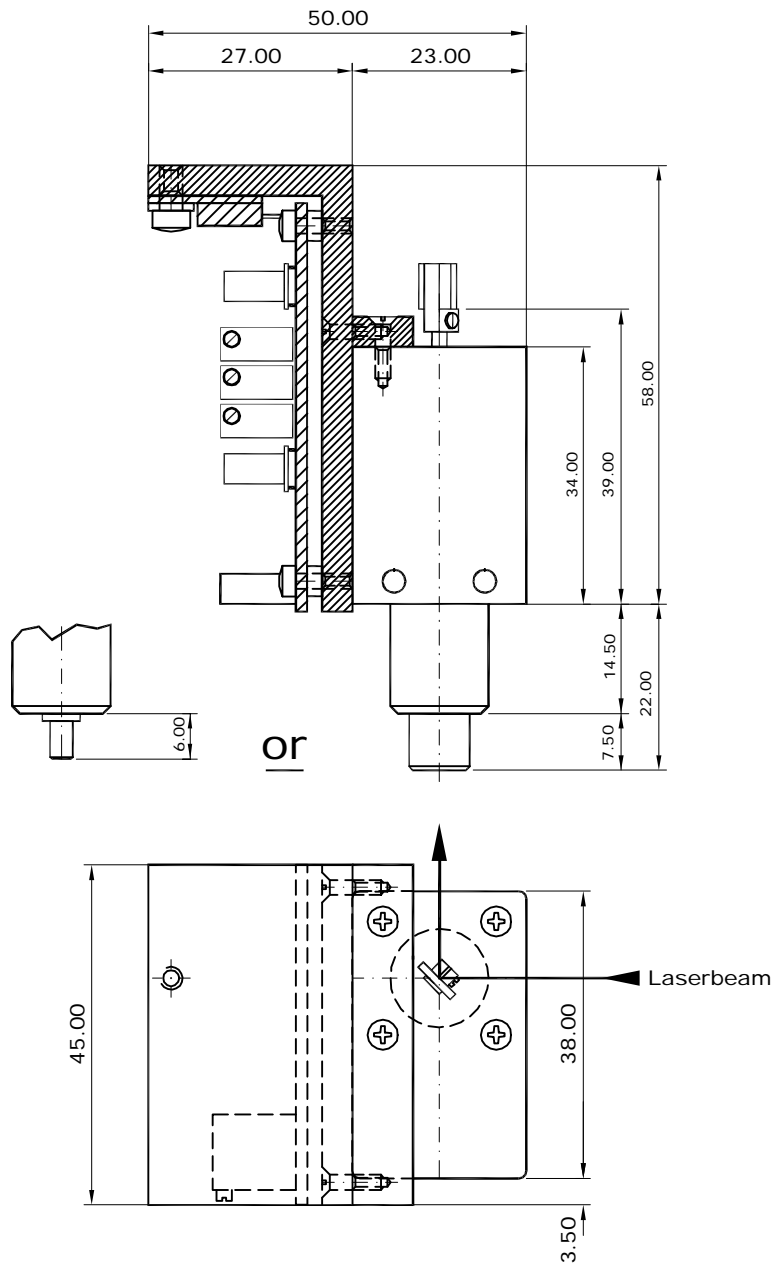


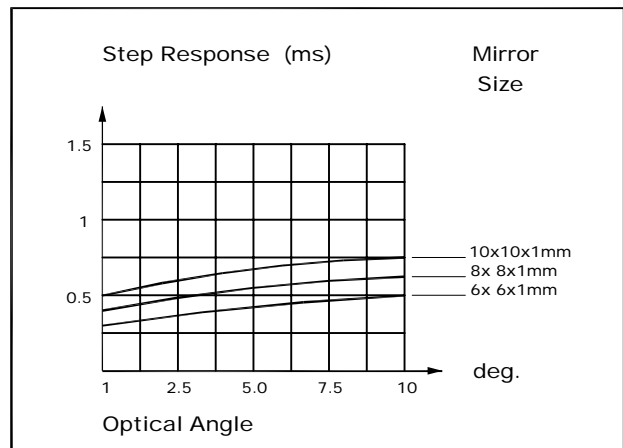
High-Speed-Scan-Module STEF 010

Closed-Loop-System complete with mirror and attached Drive-Electronic



Specifications

Input Signal	+/-10V max.
Supply Voltage	+/-15VDC 1.5Amp.
Optical Angle (deg.)	10
Coil Resistance parallel (ohm)	2.3
Linearity (%)	+/- 0.3
Repeatability (mrad) (10sec. test)	0.20
Zero Drift (mrad/deg. cel.)	0.50
Wobble (mrad)	0.04
Rotor Inertia (g-cm) ²	0.027
Maximum Torque (Ncm)	150
Typical Mirror Size (mm)	6x6x1 up to 10x10x1
Life time (cycles)	10 ⁹
Weight (g)	185



Measured with LSK Scanner-Driver and Mirrormount.