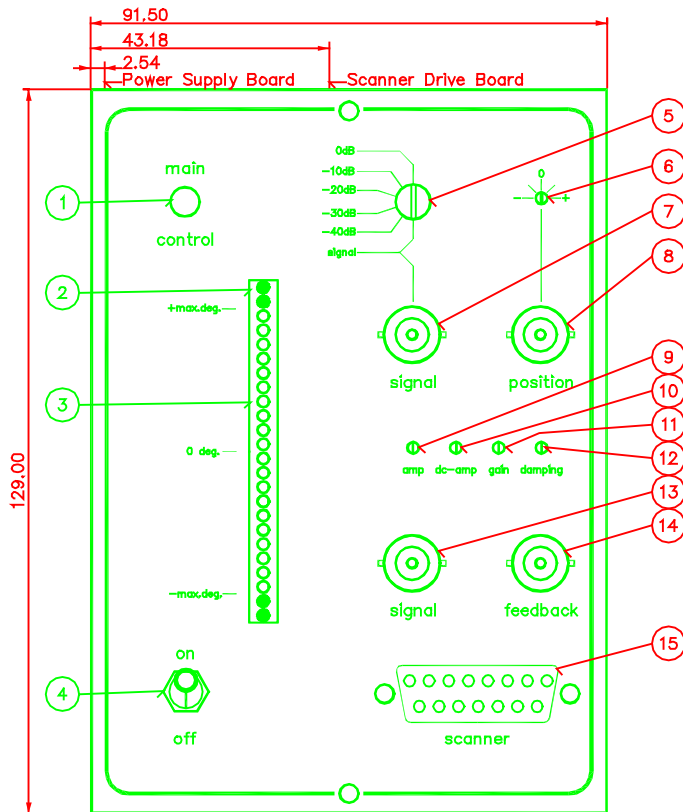


Scanner-Driver ST140/150

for Feedback-Scanner 040EF(T) and 050EF(T)
incl. Power-Supply, Testgenerator and Heating

Sheet 1



Description

- 1 Main Control
 - 2 Overload Display
 - 3 Positions Display
 - 4 Main Switch
 - 5 Testgenerator Amplitude Switch
 - 6 DC-Offset Trimmer
 - 7 Signal Input *
 - 8 DC-Offset Input *
 - 9 Signal Amplitude Trimmer
 - 10 DC-Offset Amplitude Trimmer
 - 11 Intern Gain Trimmer
 - 12 Damping Trimmer
 - 13 Scope Signal Output *
 - 14 Scope Position Signal Output*
 - 15 Connector 15 Pin D-Sub fem.
- *= BNC-Connector fem.

Operating Voltage

220 VAC 50 Hz P+N+E max. 0,25 A
 110 VAC 60 Hz P+N+E max. 0,5 A
 Country-Voltage has to be given by order

Fuse:

Power Supply : T 1 A
 Scanner Driver: T 3,15 A

Input Signal: U max. +/- 10 V

Input Signal DC-Offset: U max. +/- 10 V

Weight: 1,5 kg

