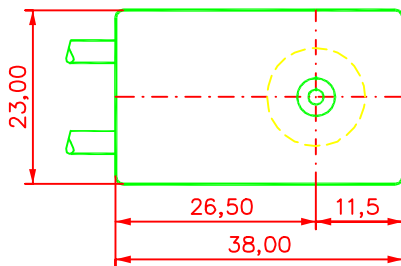


Connector 15 Pin D-Sub

- 1 Drive Coil black (1) low Shield
- 2 Drive Coil transparent (1) high
- 3 Position Output negativ transparent (2)
- 4 Ground (GND) black (2) Shield
- 5 Heater +/- red (1)
- 7 Heater (low) blue (1)
- 8 Oscillator supply volt. 12 VDC red (2)
- 9 Drive Coil black (1) low Shield
- 10 Drive Coil transparent (1) high
- 11 Position Output positiv blue (2)
- 15 Thermistor +/- yellow (2)
500 Ohm at 25 deg. cel.

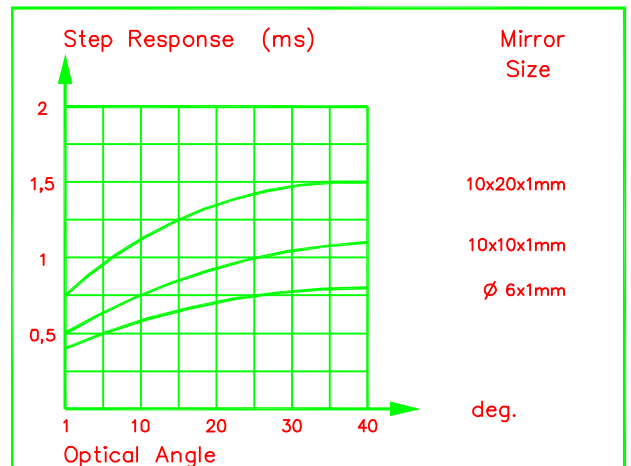
(1) = Cable 1
(2) = Cable 2

Scanner Connections 15 Pin D-Sub
Cables 300 mm long



Specifications

Optical Angle (deg.)	40
Coil Resistance parallel (ohm)	2,3
Linearity (%)	+/-0,2
Repeatability (mrad)	0,10
Zero Drift (mrad/deg. cel.)	0,60
Wobble (mrad)	0,03
Maximum Torque (Nm)	0,028
Typical Mirror Size (mm)	Ø 6 up to 12x12x1
Life time (cycles)	10 ¹⁰
Weight (g)	130



Measured with LSK Scanner-Driver and Mirrormount.